

NAPLES TO GORDON PASS COLLIER COUNTY, FLORIDA POST-HURRICANE IAN HYDROGRAPHIC EXAM SURVEY FY23 10 AND 12-FOOT PROJECT

- SURVEY NOTES**
- REFER TO SURVEY NO. 23-017.
 - DEPTHS DEPICTED BY THIS SURVEY ARE REFERENCED TO MLLW, TIDAL EPOCH 1983-2001 AS REPORTED BY THE NATIONAL OCEANIC AND ATMOSPHERIC ADMINISTRATION (NOAA). NOAA'S VDATUM MODEL WAS USED AND CALIBRATED TO THE PUBLISHED MLLW HEIGHTS OF THE BENCHMARKS ASSOCIATED WITH THE TIDE GAGE SITE SPECIFIED BELOW:

NOAA TIDAL STATION "872-51144" FOR ALL CUTS (PID: AD6328)
 - TIDAL REDUCTIONS WERE OBTAINED UTILIZING A REAL-TIME KINEMATIC (RTK) GPS AND REFERENCED TO MLLW UTILIZING A HYPACK KINEMATIC TIDE DATUM (KTD) MODEL. KTD FILE NAME IS: "BROWARD-MIAMIDADE-MONROE-COLLIER_2018_05_02.KTD".
 - ALL ELEVATIONS ARE BELOW THE CHART DATUM UNLESS PRECEDED BY A (+) SIGN.
 - PLANE COORDINATES ARE BASED ON THE TRANSVERSE MERCATOR PROJECTION FOR THE EAST ZONE (0901) OF FLORIDA AND REFERENCED TO NORTH AMERICAN DATUM OF 1983 (NAD83).
 - ALL STATIONING REFERS TO THE CENTERLINE OF THE CHANNEL.

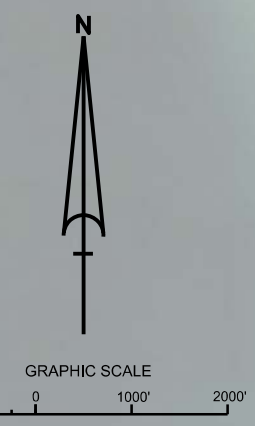
REFERENCE BASE LOCATED AT "NGP-101" (PID: BBH289)
 - THIS SURVEY WAS PERFORMED USING REAL-TIME KINEMATIC (RTK) GPS POSITIONING WITH THE FOLLOWING REFERENCE BASE LOCATION:

VERTICAL MEASUREMENTS WERE MADE USING AN EDGETECH 6205 MULTI-BEAM SYSTEM OPERATING AT 500 KHZ AND AN ECHOTRAC E20 OPERATING AT 28/200 KHZ. SOUNDINGS ARE SHOWN IN HIGH FREQUENCY.
 - VESEL: SB-44 DATE OF SURVEY: 11-12 OCT 2022 CUTS: CUTS 1 THRU 15, YACHT T.B.
 - AIDS TO NAVIGATION WERE LOCATED DURING THIS SURVEY.
 - THE INFORMATION DEPICTED ON THIS MAP REPRESENTS THE RESULTS OF SURVEYS MADE ON THE DATES INDICATED ABOVE AND CAN ONLY BE CONSIDERED AS INDICATING THE GENERAL CONDITIONS AT THAT TIME. THIS CHART IS SOLELY FOR THE DISTRIBUTION OF AVAILABLE DEPTHS AT THE TIME OF THE SURVEY.
 - SURVEY ACCURACY PERFORMANCE STANDARDS, QUALITY CONTROL, AND QUALITY ASSURANCE REQUIREMENTS WERE FOLLOWED DURING THIS SURVEY IN ACCORDANCE WITH USACE EM 1110-2-1003, HYDROGRAPHIC SURVEYING, 30 NOV 2013.

LEGEND

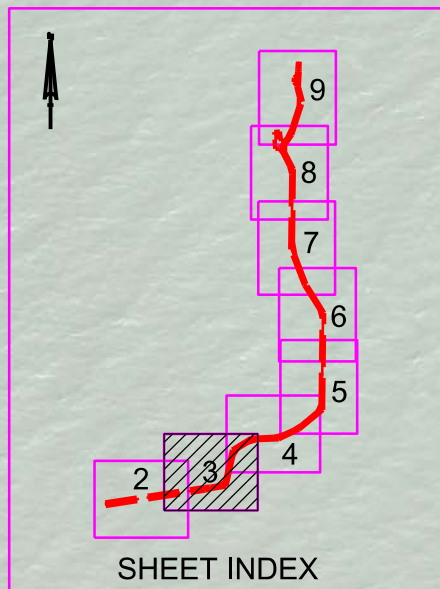
	MONUMENT
	LIGHTED BEACON
	GREEN DAY BEACON
	RED DAY BEACON
	RED LIGHTED BUOY
	GREEN LIGHTED BUOY
	CAN BUOY
	NUN BUOY
	TIDE STAFF
	PROJECT DEPTH

 US Army Corps of Engineers Jacksonville District SAFETY ON THIS JOB DEPENDS ON YOU	
DESIGNED BY: WRM	CHECKED BY: GHR
DRAWN BY: WRM	DATE: OCT 2022
PROJECT NO.: 23-017-GS-SR-BRD-LGN	
TITLE: NAPLES TO GORDON PASS COLIER COUNTY, FLORIDA POST-HURRICANE IAN HYDRO EXAM SURVEY FY23 10 & 12-FOOT PROJECT INDEX, LOCATION AND VICINITY MAP	
DEPARTMENT OF THE ARMY JACKSONVILLE DISTRICT, CORPS OF ENGINEERS JACKSONVILLE, FLORIDA	
Scale: AS SHOWN	
Drawing no. 1	
SHEET 01 OF 09	



SHEET INDEX

MAP LABEL	AIDS TO NAVIGATION	PLANE COORDINATES		LATITUDE	LONGITUDE
		X	Y		
G*3"	LT-3 (10/22)	391.976	640.028	26°05'32.02"	81°48'17.87"
G*5"	DBN-5 (10/22)	393.692	640.276	26°05'34.59"	81°47'59.07"
R*6"	LT-6 (10/22)	394.046	640.207	26°05'33.92"	81°47'55.18"
G*7"	DBN-7 (10/22)	393.851	640.323	26°05'35.06"	81°47'57.33"
R*8"	DBN-8 (10/22)	394.287	641.268	26°05'44.45"	81°47'52.61"
G*9"	LT-9 (10/22)	394.147	641.623	26°05'47.96"	81°47'54.17"
R*10"	DBN-10 (10/22)	394.488	641.663	26°05'48.37"	81°47'50.43"
INFO SIGN	SIGN (10/22)	394.558	641.694	26°05'48.68"	81°47'49.67"



US Army Corps of Engineers
Jacksonville District

SAFETY ON THIS JOB
DEPENDS ON YOU

DEPARTMENT OF THE ARMY
JACKSONVILLE DISTRICT, CORPS OF ENGINEERS
JACKSONVILLE, FLORIDA

Call by: GHR
Designed by: WRM
Drawn by: WRM
Checked by: WRM
Date: OCT 2022

23-017-ACON10.DGN
23-017-ACON12.DGN
23-017-PAVAV.DGN
23-017-PAVAV.DGN
23-017-SS-BRID.DGN
23-017-PAVAV.DGN
Reference files:
23-017-PAVAV.DGN

MAPLES TO GORRION PASS
COLLIER COUNTY, FLORIDA
**POST-HURRICANE IAN HYDRO EXAM SURVEY FY23
10 & 12-FOOT PROJECT**
STA. 30+00 CUT-3 THRU STA. 3+00 CUT-3
PLAN

Scale: AS SHOWN

Drawing no.
3

SHEET 03 OF 09



US Army Corps of Engineers
Jacksonville District

SAFETY ON THIS JOB
DEPENDS ON YOU

DEPARTMENT OF THE ARMY
JACKSONVILLE DISTRICT, CORPS OF ENGINEERS
JACKSONVILLE, FLORIDA

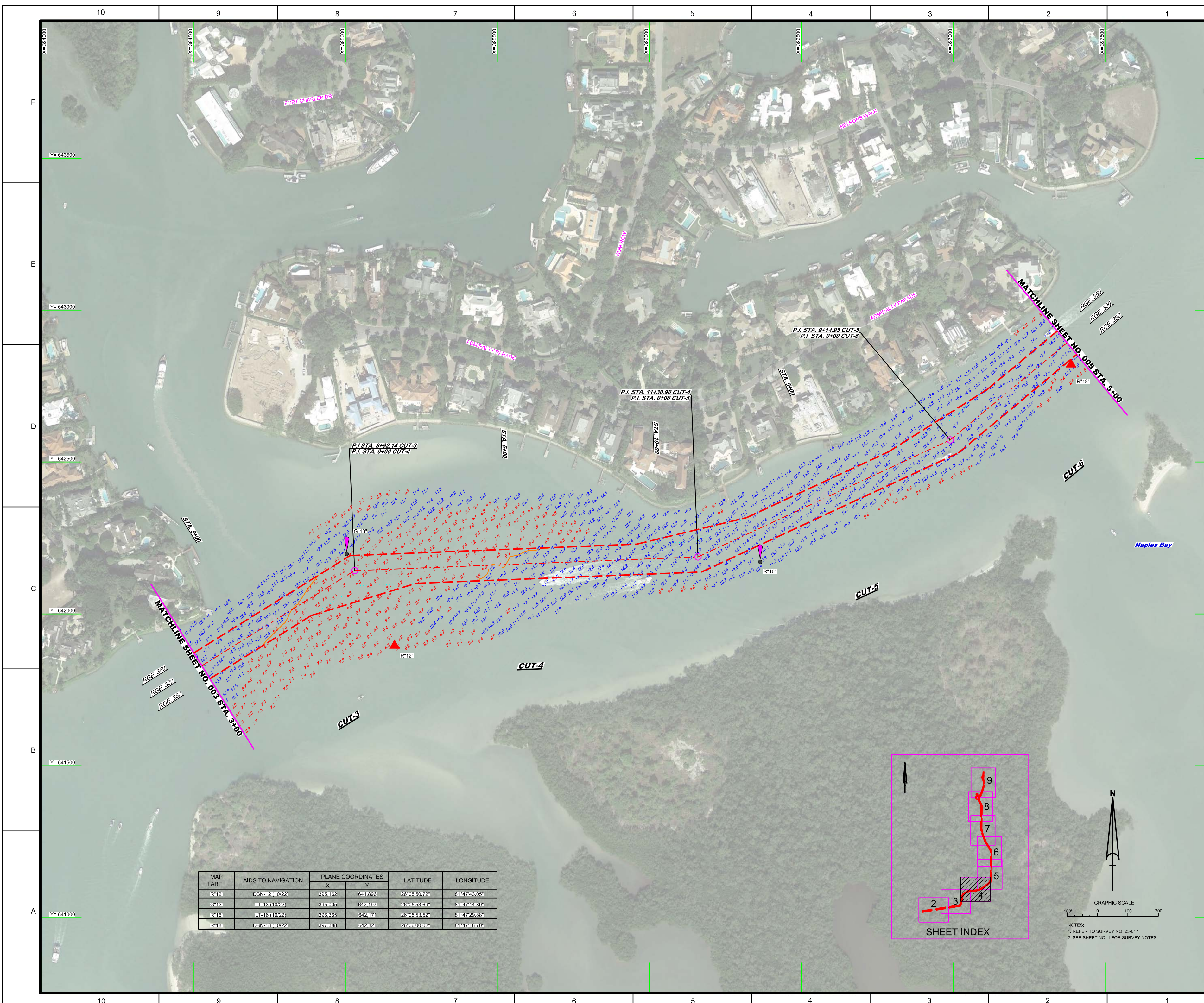
Designed by: WRM
Drawn by: WRM
Checked by: WRM
Date: OCT 2022

2307AAC0010.DGN
2307AAHV.DGN
2307AAH.DGN
2307G68B-RRALDGN
Reference File:
2307AH040.DGN

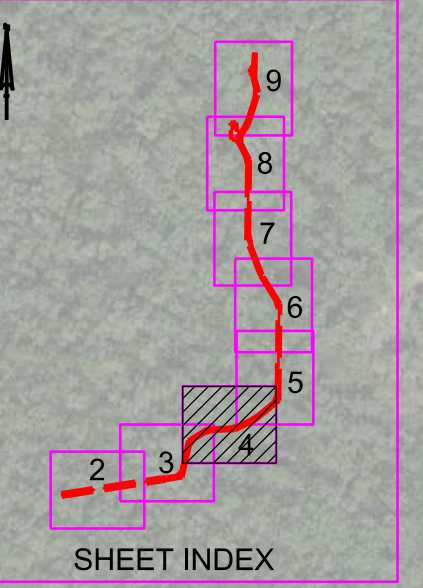
POST-HURRICANE IAN HYDRO EXAM SURVEY FY23
10 & 12-FOOT PROJECT
PLAN
STA. 3+00 CUT-3 THRU STA. 5+00 CUT-6
Scale: AS SHOWN

Drawing no.
4

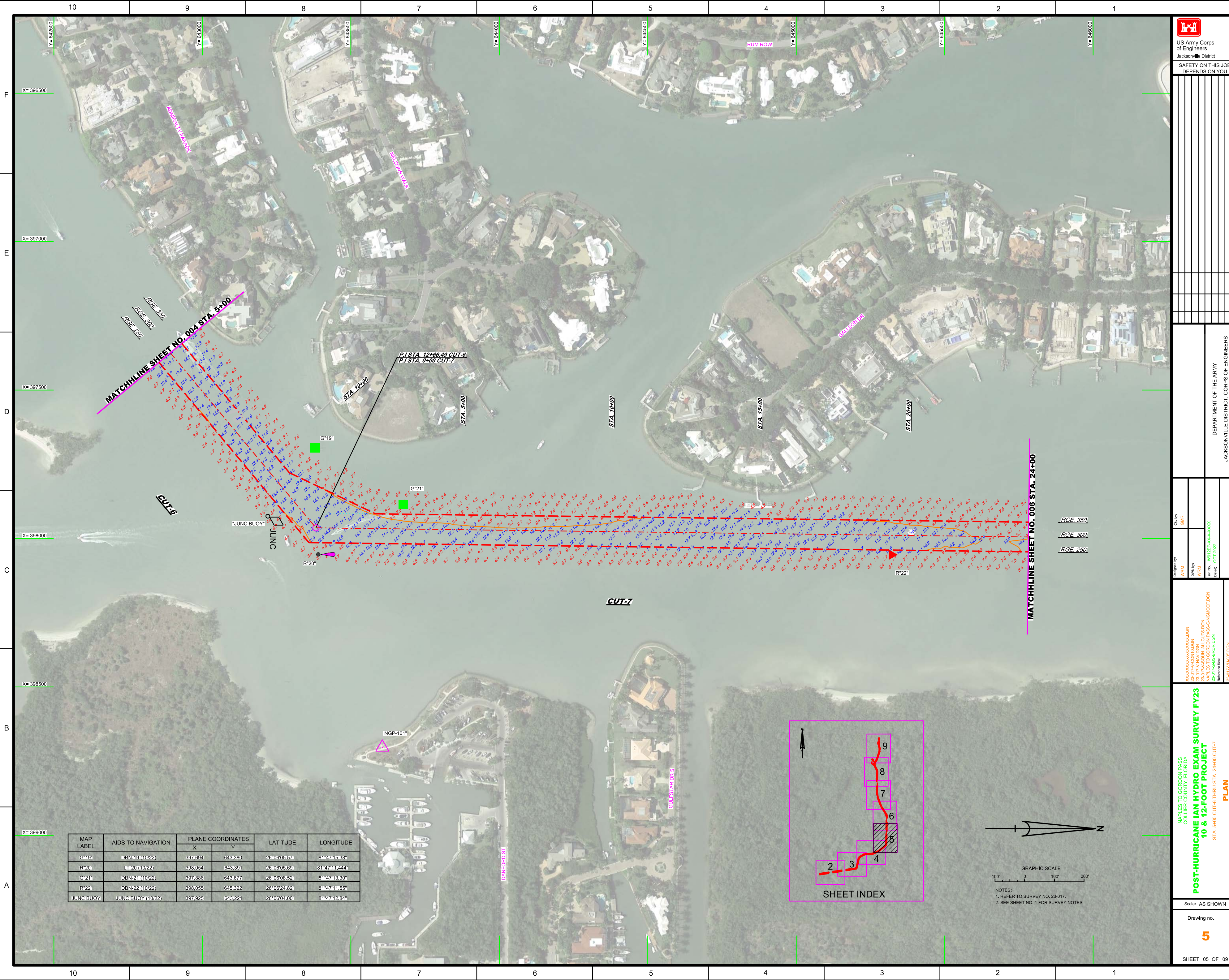
SHEET 04 OF 09



MAP LABEL	AIDS TO NAVIGATION	PLANE COORDINATES		LATITUDE	LONGITUDE
		X	Y		
R12	DBN12(10/22)	395.162	641.696	26°05'50.72"	81°47'43.05"
G18	LN18(10/22)	395.005	642.197	26°05'53.69"	81°47'44.80"
R16	LN16(10/22)	393.365	642.174	26°05'53.92"	81°47'29.88"
R18	DBN18(10/22)	397.388	642.621	26°06'00.02"	81°47'18.70"



GRAPHIC SCALE
0 100' 200'
NOTES:
1. REFER TO SURVEY NO. 23-017.
2. SEE SHEET NO. 1 FOR SURVEY NOTES.



MAP LABEL	AIDS TO NAVIGATION	PLANE COORDINATES		LATITUDE	LONGITUDE
		X	Y		
G*19	DBN-19 (10/22)	397,694	643,380	28°06'05.57"	81°47'45.38"
R*20	DBN-20 (10/22)	398,054	643,891	28°06'05.69"	81°47'41.44"
G*21	DBN-21 (10/22)	397,886	643,677	28°06'08.52"	81°47'43.30"
R*22	DBN-22 (10/22)	398,055	645,822	28°06'23.82"	81°47'41.55"
JUNC BUOY	JUNC BUOY (10/22)	397,925	643,221	28°06'04.00"	81°47'42.84"



US Army Corps of Engineers
Jacksonville District

SAFETY ON THIS JOB DEPENDS ON YOU

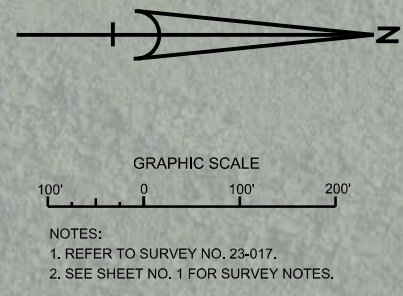
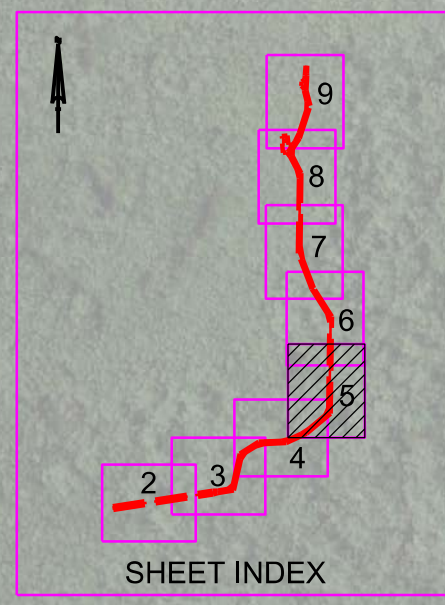
DEPARTMENT OF THE ARMY
JACKSONVILLE DISTRICT, CORPS OF ENGINEERS
JACKSONVILLE, FLORIDA

Designed by: WRM
Checked by: GHR
Drawn by: WRM
In Charge: WRM
Date: OCT 2022

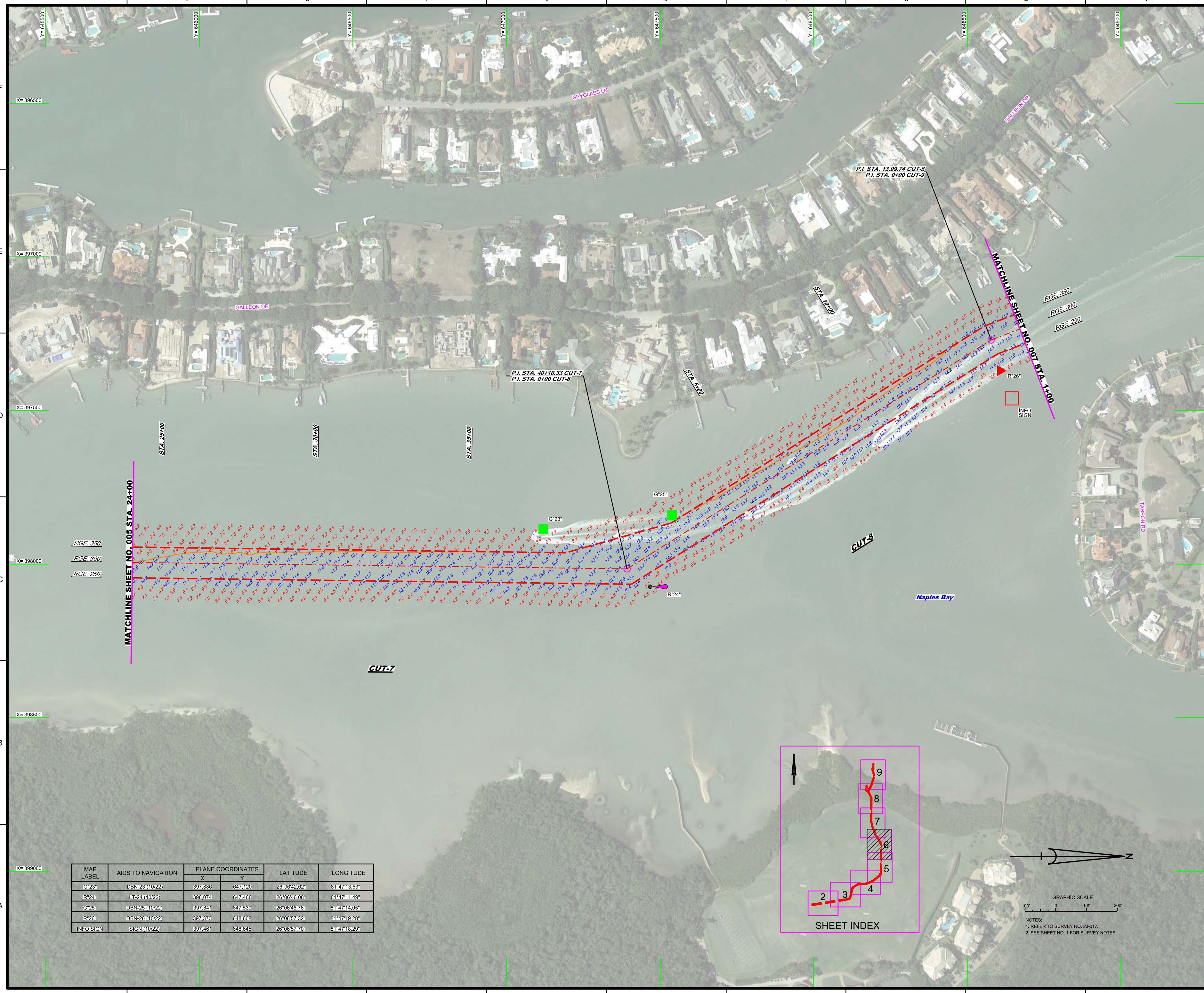
MAPLES TO GORRON PASS
COLLIER COUNTY, FLORIDA
POST-HURRICANE IAN HYDRO EXAM SURVEY FY23
10 & 12-FOOT PROJECT
STA. 5+00 CUT-6 THRU STA. 24+00 CUT-7
PLAN

Scale: AS SHOWN
Drawing no. **5**

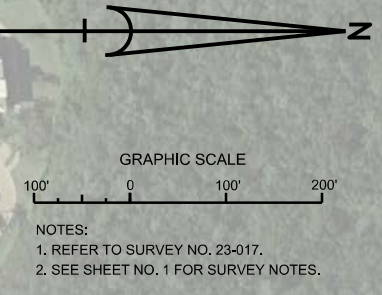
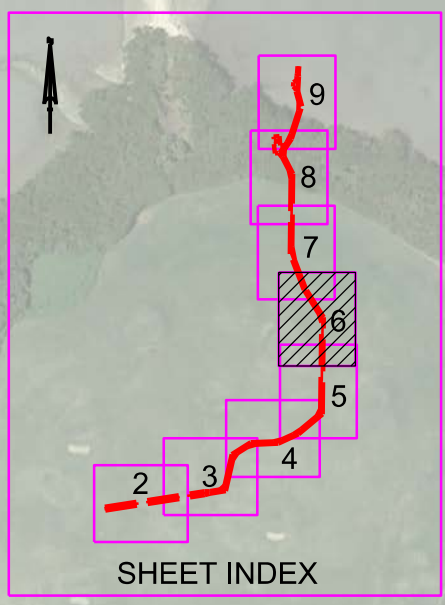
SHEET 05 OF 09



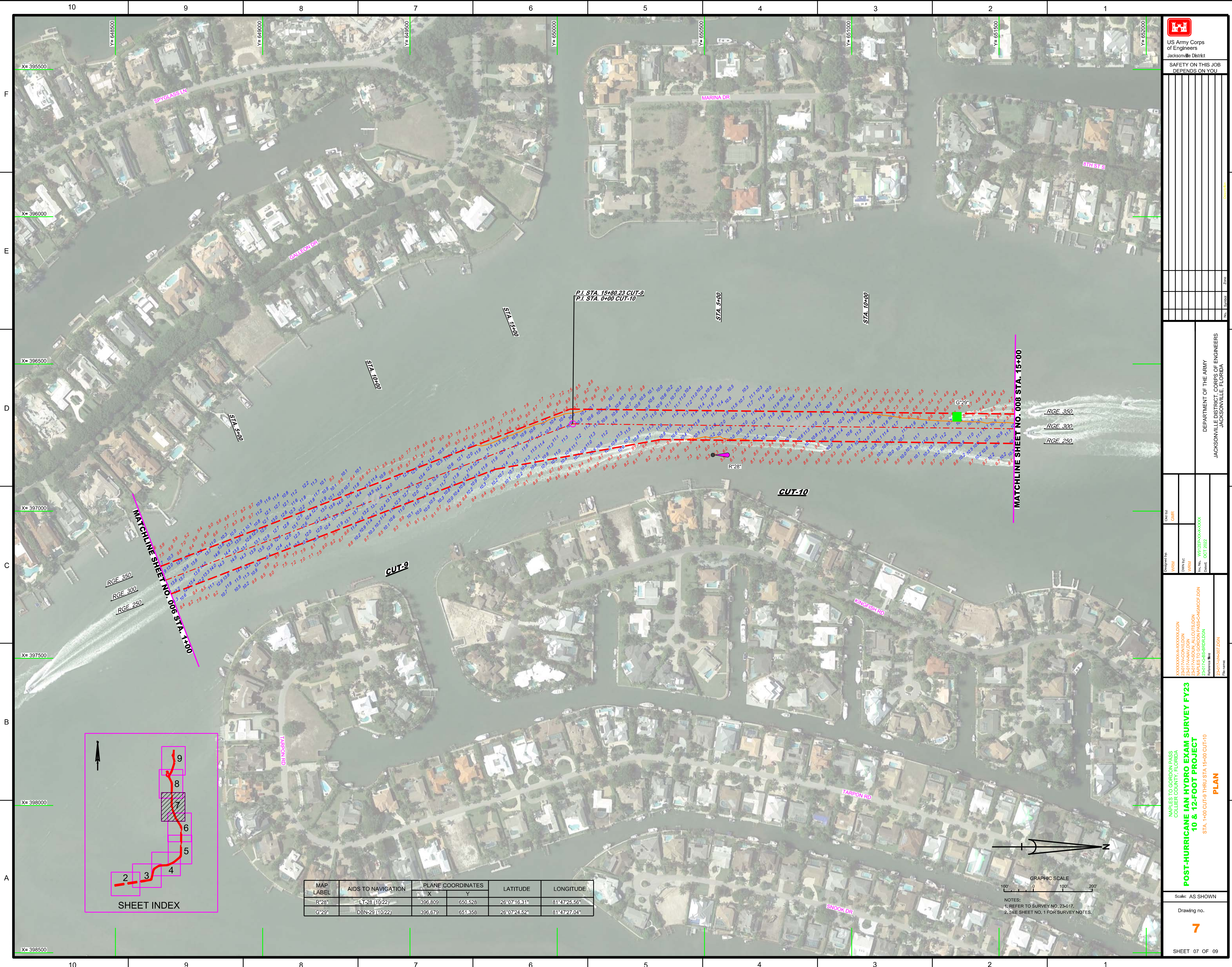
NOTES:
1. REFER TO SURVEY NO. 23-017.
2. SEE SHEET NO. 1 FOR SURVEY NOTES.



MAP LABEL	AIDS TO NAVIGATION	PLANE COORDINATES		LATITUDE	LONGITUDE
		X	Y		
G*24	DBN-23 (10/22)	397,886	647,420	26°08'42.62"	81°47'13.53"
R*24	L-24 (10/22)	398,074	647,468	26°08'46.08"	81°47'11.49"
G*25	DBN-25 (10/22)	397,841	647,632	26°08'48.76"	81°47'14.05"
R*26	DBN-26 (10/22)	397,370	648,606	26°08'57.32"	81°47'19.28"
INFO SIGN	SIGN (10/22)	397,461	648,645	26°08'57.70"	81°47'18.29"



NOTES:
 1. REFER TO SURVEY NO. 23-017.
 2. SEE SHEET NO. 1 FOR SURVEY NOTES.



US Army Corps of Engineers
Jacksonville District

SAFETY ON THIS JOB
DEPENDS ON YOU

DEPARTMENT OF THE ARMY
JACKSONVILLE DISTRICT, CORPS OF ENGINEERS
JACKSONVILLE, FLORIDA

Checked By: GHR
Designed By: WRM
Drawn By: WRM

Maples to Gordon Pass
Collins County, Florida
APPLICABLE TO GORDON PASS CANAL
2407-SS-BRIDGES

Reference Map: 2407-PH-07.DGN
File Name: 2407-PH-07.DGN

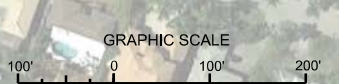
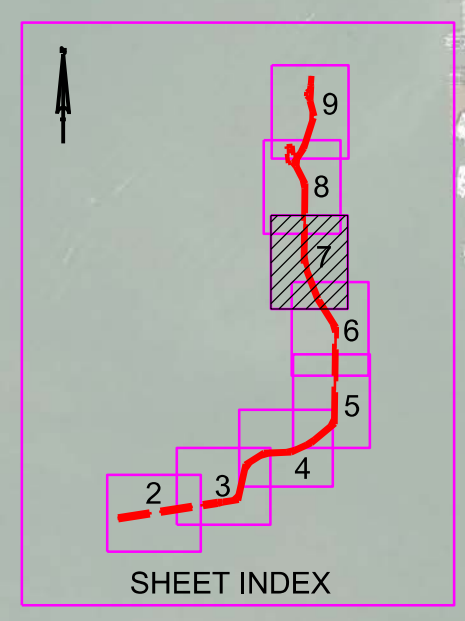
POST-HURRICANE IAN HYDRO EXAM SURVEY FY23
10 & 12-FOOT PROJECT
PLAN

Scale: AS SHOWN

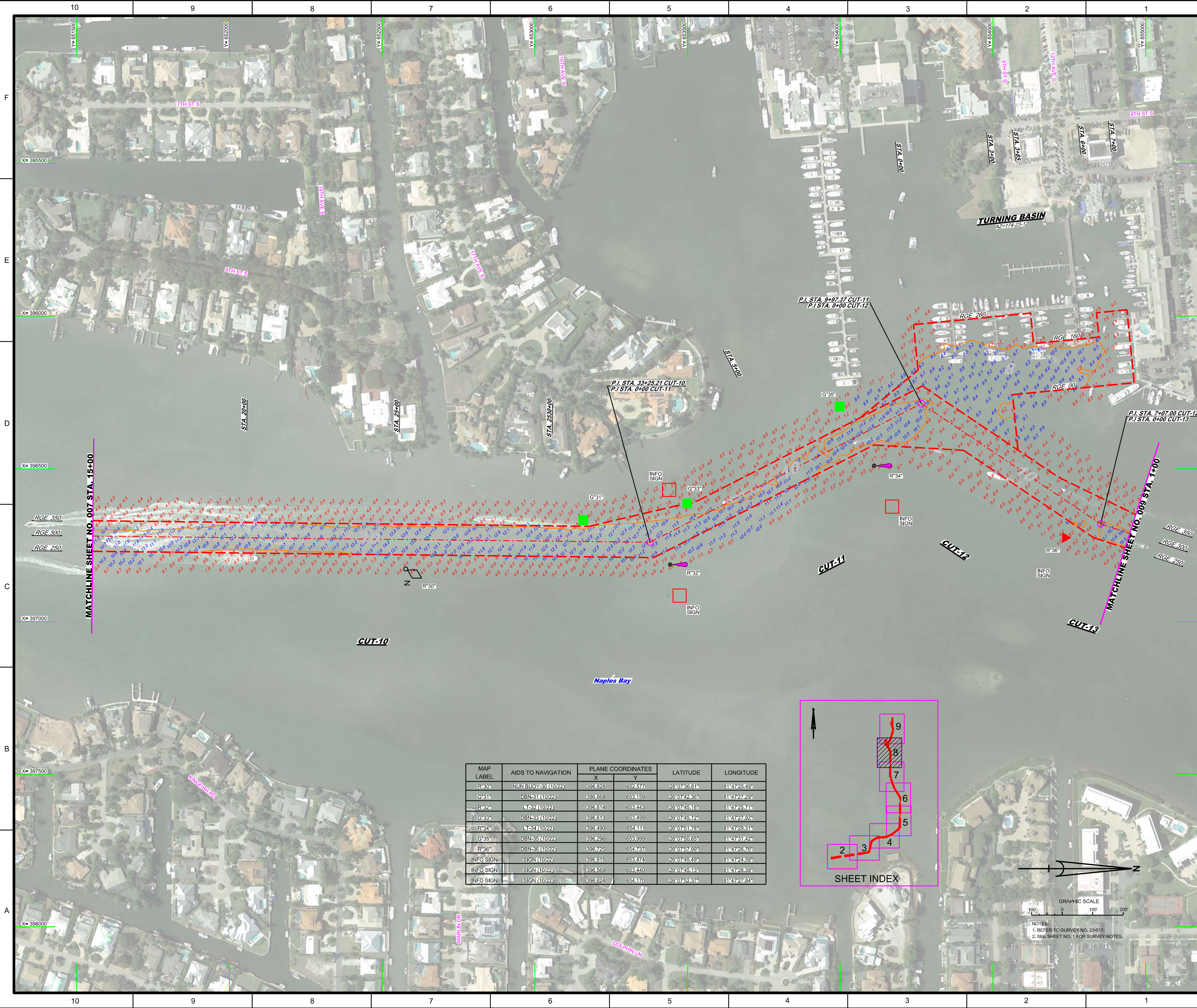
Drawing No. **7**

SHEET 07 OF 09

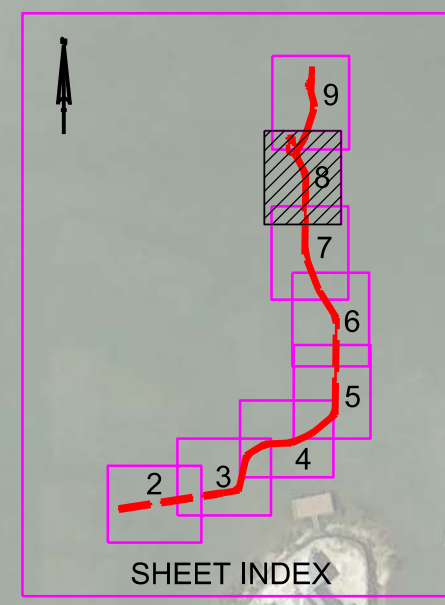
MAP LABEL	AIDS TO NAVIGATION	PLANE COORDINATES		LATITUDE	LONGITUDE
		X	Y		
R-28	LT-28 (10/22)	396,809	650,528	26°07'16.31"	81°47'25.56"
G-29	DBN-29 (10/22)	396,679	651,358	26°07'24.52"	81°47'27.04"



NOTES:
1. REFER TO SURVEY NO. 23-017.
2. SEE SHEET NO. 1 FOR SURVEY NOTES.



MAP LABEL	AIDS TO NAVIGATION	PLANE COORDINATES		LATITUDE	LONGITUDE
		X	Y		
R^30	NUN BUOY-30 (10/22)	395,828	652,577	26°07'36.61"	81°47'25.49"
G^31	DBN-31 (10/22)	395,668	653,159	26°07'42.36"	81°47'27.29"
R^32	LT-32 (10/22)	395,814	653,443	26°07'45.18"	81°47'25.71"
G^33	DBN-33 (10/22)	395,613	653,499	26°07'45.72"	81°47'27.92"
R^34	LT-34 (10/22)	395,490	654,111	26°07'51.78"	81°47'29.31"
G^35	DBN-35 (10/22)	395,286	653,999	26°07'50.65"	81°47'31.42"
R^36	DBN-36 (10/22)	395,725	654,737	26°07'57.99"	81°47'26.76"
INFO SIGN	SIGN (10/22)	395,915	653,474	26°07'45.49"	81°47'24.59"
INFO SIGN	SIGN (10/22)	395,569	653,440	26°07'45.13"	81°47'28.39"
INFO SIGN	SIGN (10/22)	395,624	654,170	26°07'52.37"	81°47'27.84"



GRAPHIC SCALE
0 100 200
NOTES:
1. REFER TO SURVEY NO. 23-017.
2. SEE SHEET NO. 1 FOR SURVEY NOTES.

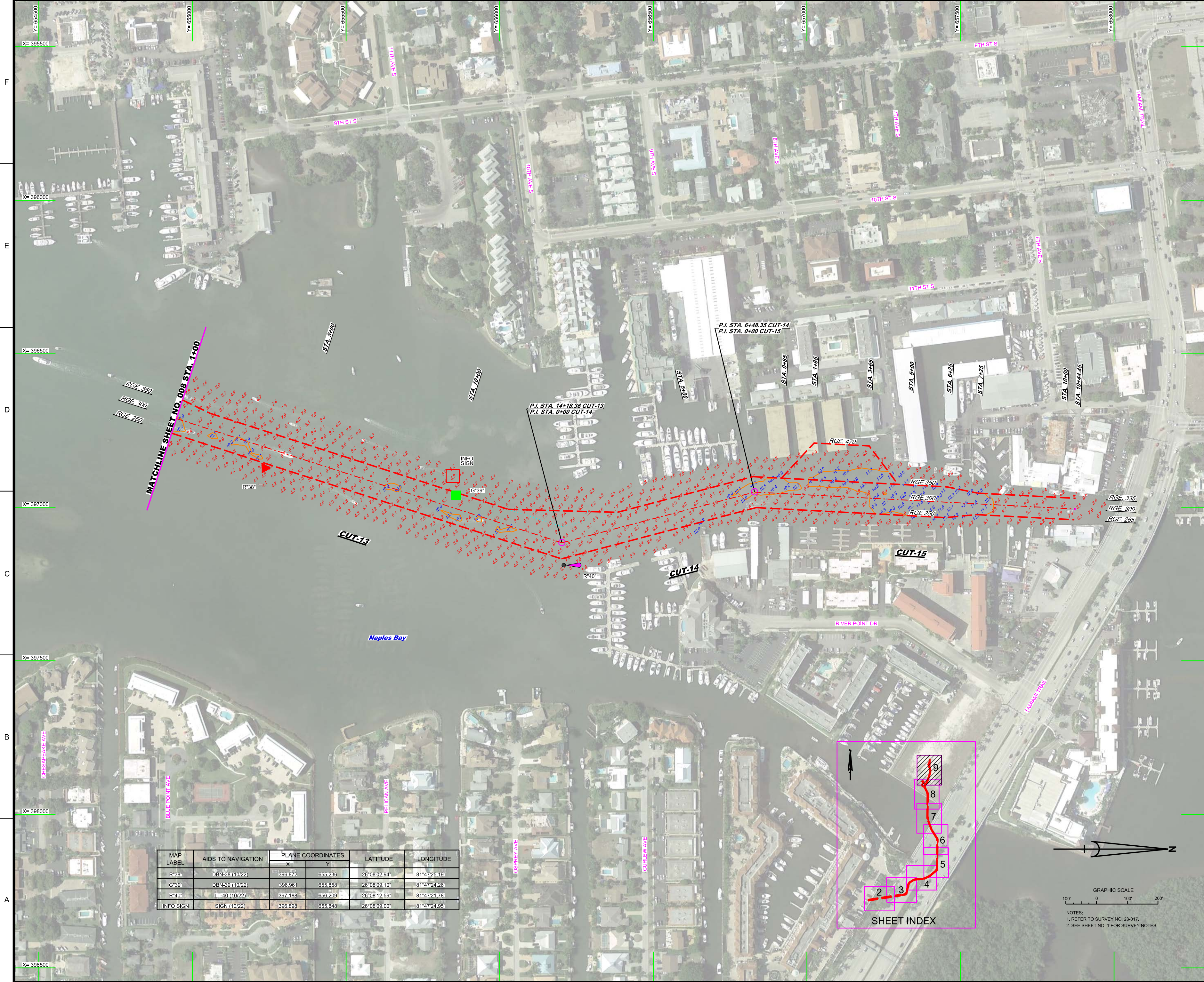
DEPARTMENT OF THE ARMY
JACKSONVILLE DISTRICT, CORPS OF ENGINEERS
JACKSONVILLE, FLORIDA

Checked By: GHR
Designed By: WRM
Drawn By: WRM
File No: W12356789-0001
Date: OCT 2022

2307AAC0010.DGN
2307AHAY.DGN
2307AIAV.DGN
2307AIBS.DGN
2307AIBS-SR.DGN
2307AH08.DGN
Reference: 2307AH08.DGN

MAPLES TO GORRION PASS
COLLIER COUNTY, FLORIDA
POST-HURRICANE IAN HYDRO EXAM SURVEY FY23
10 & 12-FOOT PROJECT
STA. 1+00 CUT-13 THRU STA. 10+44.45 CUT-15
PLAN

Scale: AS SHOWN
Drawing no. **9**
SHEET 09 OF 09



MAP LABEL	AIDS TO NAVIGATION	PLANE COORDINATES		LATITUDE	LONGITUDE
		X	Y		
R*38°	DBN-38 (10/22)	398,872	655,236	26°08'02.94"	81°47'25.19"
G*39°	DBN-39 (10/22)	398,961	655,858	26°08'09.10"	81°47'24.26"
R*40°	LT-40 (10/22)	397,188	656,209	26°08'12.59"	81°47'21.78"
INFO SIGN	SIGN (10/22)	398,898	655,848	26°08'09.00"	81°47'24.95"